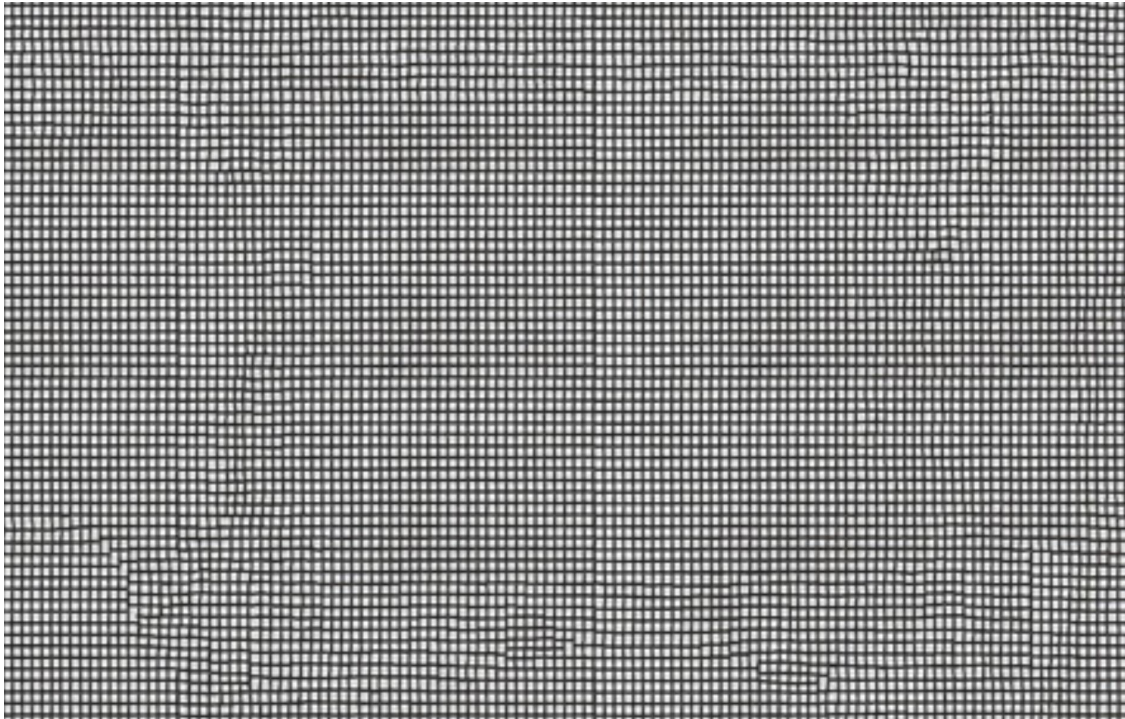


Art 3433c

Screenprint

School of Art + Art History - University of Florida



Screen - Screenprint Class of Fall 2023 mascot

Fall 2023 / M/W 3:00 - 6:00 pm est / Location: FAC 318 & 308 / 3 credits

Instructor: Adrian Gonzalez / Assistant Professor / gonzalezadrian@ufl.edu

Fine Arts Building C / Room 317A

Office Hours: M 11:45 - 12:40 pm est by appointment

Office Hours may be used for questions about class, assignments, or general conversation, processing, and reflection. No agenda or question is required to come to Office Hours. I am typically on campus on Mondays and Wednesdays.

Community is at the heart of printmaking. Whether we are working independently or in a group we all share this space called a print shop and have an impact on each other as we navigate the environment. Please be kind to each other.

Course Description

This course will focus on screenprinting traditions of hand-pulled printing and modern processes while taking risks and solving unique problems with unconventional methods. This course is designed to be responsive to a contemporary art practice through a variety of ideas and dissemination of information. We will dive into techniques, advancing ideas in screenprint, and collaborations of the medium and discourse. Students will explore material possibilities, variability, application, and meaning through traditional methods and be exposed to new and old screen-printing techniques, problems, making, and thinking. This course will help you discover the potential of printmaking as a tool to help expand your practice and discover new possibilities with acceptance to chance and failure.

Course Objectives

1. Gain a knowledge of the history of screenprinting and its role in contemporary art practice.
2. Utilization of generative approaches using print processes and develop confidence in the printmaking studio.
3. Develop a small body of work in the form of a series or suite of prints that are connected by a personal, formal, and conceptual framework.
4. Establish a personal visual language, familiarity and facility with techniques and repertoire of screen-printing.
5. Develop an awareness of the work of artists, makers, and thinkers whose work in printmaking and drawing that inspires your own concepts, ideas and interests.
6. Ability to apply course concepts and techniques to independent studio work. Make a bridge between your own ideas/concepts with image making in the print arts.
7. Gain a knowledge of screen printing tools and techniques including printing on alternate materials, equipment and tool care, health and safety, image generation techniques.

Course Structure & Philosophy

The key components of the course are making, discovery, critical feedback, technical instruction, and open dialogue. It will consist of lectures, demonstrations, critiques, field trips, research, readings, discussions, and time for studio work and investigation. It is structured to introduce specific technical and conceptual information as well as allow time for tutorial and guidance, group discussion, and project development in class. Our readings, group conversations, as well as individual meetings will help students form and forge ideas and directions for their work. Throughout the semester, techniques and approaches will be introduced as students follow along. Students will develop three major creative projects and

follow along with instructional projects that will help with an approach to process-based work that range from systematic to improvisational.

Expectations

Students are expected to engage actively in the studio. Successful students work on projects during and outside of class, complete readings and assignments on time and proactively source all necessary materials. They fully engage in individual art research by seeking out contemporary artists of interest and by attending lectures and art exhibitions. This class is dependent on a community of focused, curious, critical, and thoughtful students. Please make the most out of your experience by participating wholeheartedly, and cultivating community with your peers.

1. Studio work: Completed studio projects presented at critique, studies, research, ideation and evolution of concept.
2. Artists Presentations
3. Studio Journal in support of class studio work.
4. Critical thinking and class participation in group discussions, performance in critiques (analyzing the work of your classmates as well as your own), and the ability to accept and digest advice and suggestions. In addition, students are expected to clean up as well as practice safe and thoughtful use of materials, tools, and facilities.
5. Tenacity, in terms of studio work, research, maintenance and willingness to succeed.
6. Complete all assignments within the outlined timeframe

****The demands of printmaking are great, both in time investment and physical and mental effort. You are not expected to be able to complete all work during class hours! You should expect to work outside of class time a minimum of 6 hours each week.****

Texts, materials, and software

Most required materials will be provided. Students are responsible for obtaining materials for independent projects. Required texts are available as pdfs in the readings folder under "Files" on Canvas.

Recommended Texts:

- Prints and Their Makers by Phil Sanders
- Conversations from the Print Studio: A Master Printer in Collaboration with Ten Artists by Elisabeth Hodermarsky and Craig Zammiello
- Printmaking: History and Process by Donald Saff and Deli Sacilotto

Daily Work and Assignments

If you do a little bit every day, you can't help but accomplish a lot. Part of making the transition to working outside the academy, is to learn how to pace yourself, make time for yourself, and get your work done without drama. Good work habits are the domain of Professional Practice.

Students will develop a small body of work, the expectation is that you complete a final portfolio of 6-8 works you feel best represent the formal, technical and conceptual aspects of your work. To arrive at this number of prints, you should expect to make 2 to 3 times the number of prints, monotypes, and drawings to select from. While this may sound like a lot, prints and monoprints provide a spontaneous way to make images and impressions and for experimentation. Trial and error is the best way to achieve the most innovative and best results. It is helpful and actually necessary to learn from both successes and failures with the knowledge that both art and printmaking require "practice." Practice and making are the only way to develop confidence and fluidity in the printmaking process. A personal visual language and repertoire of print methods will result from an iterative process. You will become able to see potential from experimentation and to refine your approach, evolving your ideas over time and various proofs.

Studio Journal

A Studio Journal will be an important part of this course. You will keep a log of what you have made, your reflections, struggles, research. It will be the archive of all your ideas. You will submit your journals throughout the semester and have open discussions with the class. Dates are found on Canvas.

To support your studio practice, Students will maintain a record of all research: class notes, sketches, images, ideation, creative writings, etc. In a physical notebook. This is a rigorous, daily activity to be conducted throughout the semester. It will show compositional and idea exploration, proposals, propositions, and directions (both taken and abandoned). Include notes, doodles, lecture, video, demo highlights, clippings, photographs, artist research and ideas you may want to explore. Investigate artists discussed in class, as well as responses to visiting artist lectures and gallery/museum exhibitions. This is a visualization of your thinking and a guide to facilitate your goals for the semester. Reviewed periodically, this book should be with you always and available in your studio for review.

Peer Partner

Each student will be paired with a peer partner: another student in the class who will act as a sounding board, proofreader, and informal consultant. Peer partnerships are mutually beneficial relationships that enhance learning and growth through ongoing dialogue. Peer partners can rely on each other for feedback on written assignments and materials as well as studio work and course problem-solving.

Creative Project and Assignments

Includes creative projects, writing, research, presentations, drawings, and in class exercises. All must be submitted on time. Throughout the semester, students will have the opportunity to develop several projects engaging contemporary art topics and practices that are both collaborative and individual, as well as delve into self-directed interdisciplinary research. As

artists, you will be forever venturing into new and unknown territory. The ability to creatively respond and adapt to a variety of prompts is an essential skill, we learn constantly from contemporary art and discourse. Projects should be ambitious, thoughtful, formally well presented, and completed on time.

PROJECT 1 ExScreenSiteCorpse

PROJECT 2 THREE TRANSLATIONS

PROJECT 2 BIG HEAD

PROJECT 3 A PIECE THE SAME SIZE AS YOU

Project 4 - A PDF Portfolio

***Find project details on Canvas

Communication

Students are advised to use ufl.edu email for all UF course correspondence and to check and respond regularly. It is best not to rely on canvas email, but email the instructor directly via Outlook. I usually respond within 24 hours: emails sent after 6pm Friday or over the weekend may not receive a response until Monday. For emergencies call UF Police 352.392.1111 or 911.

* Canvas is where to find announcements, weekly calendar/due dates, assignment descriptions, course materials/readings, grading, and office hours/class, zoom links.

Visiting Artists Calendar / Fall 2023

You are expected to attend visiting artist talks and take notes. You are required to attend 2 lectures and submit a one page reflection and research. We will discuss Artists in the class following the lecture. Dates on submissions will be found on canvas.

Casey Whittier

Tuesday, September 12th / 6:15pm / In-Person / Little Hall

Ana María Gómez López

Tuesday, September 19th / 6:15pm / Virtual Talk: Zoom

Domingo Castillo

Tuesday, October 3rd / 6:15pm / In-Person / Little Hall

Troy Montes Michie,

Tuesday, October 17th / 6:15pm / Virtual Talk: Zoom

Calendar Outline

Disclaimer: The instructor reserves the right to make modifications to this calendar throughout the semester

Fall / 2023	Monday	Wednesday
Week 1		Introduction to course and facilities
Week 2	5 min Presentations Lecture 1 Demo Reading discussion Studio time	Demo Studio time
Week 3	Labor day no class	Project 1 due / reflection
Week 4	Project 2 intro Lecture 2 Presentation assignments Reading discussion	Demo Individual visits with Adrian
Week 5	Studio time	Studio time
Week 6	Project 2 due / critique	Project 2 due / critique
Week 7	Project 3 lecture Reading discussion Demo	Studio time
Week 8	Studio time	Midterm
Week 9	TBD	Studio time
Week 10	Studio time	Project 3 critique
Week 11	Project 3 Parade	Lecture Project 4 Reading discussion
Week 12	Small group visits	Studio time
Week 13	Reading reflection	Studio time
Week 14	Individual visits with Adrian	No Class - Thanksgiving break
Week 15	Studio Time	Final Critique / canvas upload for all
Week 16	Final Critique	PDF portfolio due / clean up

Course Grading Criteria

Grades for this course will be based on creative projects, reading reflections and discussions, and citizenship. You will be graded both on individual performance and in relation to your peers. You will receive a midterm and final grade. Grading criteria on creative projects will be based on students' evolution of finished prints, aesthetic concerns, craftsmanship, technical ability, conceptual rigor, inventiveness, risk-taking, adherence to consistency in idea, attentiveness to critique feedback.

Creative Projects 70%

Creative projects will be evaluated on demonstrated creativity, innovation, effort, presentation, craft, and overall facility with course concepts and techniques. This includes presentations.

Readings, Discussions, Attendance, and Citizenship 15%

These course components will be evaluated based on preparedness, relevance, and critical rigor. Citizenship includes participation, effort, and community engagement.

Journal 15%

*Please Note: A grade of C or below will not count toward major requirements.

Grade Values

A, A-: Superior work and effort. This grade level is for those who demonstrate and maintain strong creative concepts, intellectual curiosity, focused work ethic, and courage to push beyond safe limits. They work consistently and are engaged in outside research inherent to their studio practice facilitated by self-generated questions and critical thinking. They actively participate in critiques and seminars, and show a high level of independence, professionalism, and motivation facilitating the studio community and their education.

B+, B, B-: Very good work and effort. This grade implies above average work, participation/citizenship and demonstrates an effort beyond expectations to discover in the process of developing a solid studio practice. The B student works hard but struggles some with productivity and analysis of studio work in context; or has good conceptual goals but does not put forth substantial skill/effort to communicate them effectively. The B range student may be doing minimal outside research to develop ideas but makes use of the faculty/peer suggestions and dialogue.

C+, C, C-: Average work and effort. This grade indicates good attendance, completion of ideas, and some extra work. Adequate time spent in the studio. The C student struggles with resolving projects in a coherent manner, or may struggle with the development of a consistent

and rigorous studio practice. Their participation and initiative in critique settings and seminar is minimal, and they often fail to initiate peer/faculty feedback.

D+, D, D-: Unsatisfactory work. Often, these grades are earned through poor attendance, late work or not following directions.

E: Failure to meet all criteria of assignment accompanied by unacceptable studio practice.

Grading Scale

A 95-100, A- 94-90, B+ 89-87, B 86-84, B- 83-80, C+ 79-77, C 76-74, C- 73-70, D+ 69-67, D 66-64, D- 63-60, E 59-0

UF final grades and grading policies info:

<https://catalog.ufl.edu/ugrad/current/regulations/info/grades.aspx>

Attendance, Excused Absences and Emergencies

Class attendance will be taken at the beginning of class. Lateness of more than 15 minutes or early departure is considered an absence (and habitual lateness of under 20 minutes will also affect your participation grade as every three times you are late counts as one absence). Participation including attendance, is 15% of your final grade, and will be reduced according to the structure below:

- 85-90% attendance = "Participation" Grade can be no higher than a "B."
- 75-85% attendance = "Participation" Grade can be no higher than a "C."
- 70% or less attendance will result in failure of the course.

For EXCUSED absences due to emergency, illness, court appearance, death in the family, or in order to observe a special religious holiday from affecting your attendance by emailing documentation of your excused absence (such as a doctor's note, or note from family) to the instructor. Regardless if an absence is excused or unexcused, you MUST be in dialogue with your instructor or a peer to keep pace with course content, and arrange for alternate participation with any team or collaborative projects. Excused absences are updated twice a semester, along with your Participation Grade.

Please see University of Florida Attendance Policies and criteria for excused absences at: <https://catalog.ufl.edu/ugrad/current/regulations/info/attendance>.

At the University of Florida, students and faculty work together to allow students the opportunity to observe the holy days of their faith. A student should inform the faculty member of the religious observances of their faith that will conflict with class attendance, with tests or examinations, or with other class activities prior to the class or occurrence of that test or activity. The faculty member is then obligated to accommodate that particular student's religious observances. Because students represent a myriad of cultures and many faiths, the University of Florida is not able to assure that scheduled academic activities do not conflict with the holy days of all religious groups. Accordingly, individual students should make their need for an excused absence known in advance of the scheduled activities.

Listed below are dates of some of the major religious holidays or obligations in the Fall 2022/Spring 2023 semester that may pose potential conflicts for observant students.

The Jewish holidays that may pose potential scheduling conflicts begin at sundown on the first day listed and end at nightfall of the last day shown:

September 25-27 Rosh Hashanah

October 4- 5 Yom Kippur

October 9 -11 Sukkot Opening Days

October 16-17 Shemini Atzeret

October 17-18 Simchat Torah

April 5-7 Passover Opening Days

April 10-13 Passover Closing Days

May 25-27 Shavuot

Additionally, the Sabbath/Shabbat is celebrated each Friday at sundown through Saturday at nightfall.

Baha'i students may require observance on the following days:

October 26-27 Twin Holy Days

May 24 Declaration of the Bab

The dates this fall that may present a conflict for Hindu students are:

October 5 Dussehra

October 24-28 Diwali (also celebrated by Jains and Sikhs)

Muslim student may require observance on the following days:

March 22-April 20 (approximately) Ramadan

April 21-22 Eid al-Fitr

Late Work Policy

Work submitted any time after the due date will be graded down one letter grade per class meeting. An assignment more than 5 days late will receive an E. No work resubmission will be accepted. Policy for make-up work assignments: If due to circumstances beyond your control: severe medical emergencies, family matters which demand your not attending class etc. I will work with you to arrive at an equitable solution for make-up and completion of the course assignments.

Course Evaluations

Students are expected to provide professional and respectful feedback on the quality of instruction in this course by completing course evaluations online via GatorEvals. Guidance on how to give feedback in a professional and respectful manner is available at <https://gatorevals.aa.ufl.edu/students/>. Students will be notified when the evaluation period opens, typically during the last two or three weeks of the semester, but students will be given

specific times when they are open. and can complete evaluations through the email they receive from GatorEvals, in their Canvas course menu under GatorEvals, or via <https://ufl.bluera.com/ufl/>. Summaries of course evaluation results are available to students at <https://gatorevals.aa.ufl.edu/public-results/>.

Materials and Supplies Fee

Although you will need to buy some basic supplies for this course, and materials specific to individual projects throughout the semester, it need not break the bank. Thrift stores, dumpsters, dollar stores, garage sales or flea markets are excellent sources for art materials. Be resourceful. The Print Studio also maintains an inventory of additional supplies and equipment that will be used by students in the course, so please ask us before you buy any extra supplies related to your individual projects.

Printmaking Suppliers

Ryonet — <https://www.screenprinting.com/>
Tackach — <https://www.takachpress.com/>
Graphic Chemical & Ink Co. — <https://www.graphicchemical.com/>
Renaissance Graphics — <https://www.renaissancegraphics.com/>
McClain's — <https://www.imcclains.com/>
Speedball — <https://www.speedballart.com/>
Talas — <https://www.talasonline.com/>
Dick Blick — <https://www.dickblick.com/>
Utrecht — <https://www.utrechtart.com/>
River City Graphics — <https://www.screenprintsupplies.com>

UF SA+AH Printmaking Area

The printmaking labs are a collaborative, democratic space dedicated to communal making. We ask for all participants in the space, be mindful and respectful of each other and our shared equipment. This guide generally outlines the procedures for using various areas of the Printmaking lab area; detailed Health & Safety guidelines can be found in the SAAH Health and Safety Handbook. <https://arts.ufl.edu/academics/art-and-art-history/health-safety/>

Access

Printmaking courses will require a significant amount of work in the studio outside of class. Use of the facilities are currently reserved for students enrolled in printmaking classes and graduate students. You must complete a safety orientation to sign up for open studio access ([Contact Myles Dunigan mdunigan@arts.ufl.edu](mailto:mdunigan@arts.ufl.edu) for training appointments or sign up on the Print Shop canvas).

- Follow all COVID-19 guidelines when in the studio. Masks are expected be worn at all times.

- Do not work in the studio alone
- No Food/Eating in the studios. Beverages must be covered .
- Follow the proper procedure for reserving studio time in accordance with COVID guidance.
- Only SAAH students, faculty and staff are allowed in SAAH buildings. Pets, children, roommates, etc. are not permitted in the studio spaces.
- Certain print materials pose moderate to significant health risks; consult the teaching lab specialist or your faculty for instruction on safe use.
- Do not prop open the doors or give out the door codes to others.

Ventilation

FAC 318, 318A (acid room) and 311 (type shop) are equipped with ventilation systems. You must have the ventilation turned on and the studio doors closed when using nitric acid etching baths and/or solvents (lithotine, California wash, Gamsol, etc.) The ventilation system in FAC 311 must remain on at all times. The 318/318A system should remain off unless certain chemicals/processes are in use.

Health and Safety

Refer to the SAAH H&S Handbook for complete guidelines. All health and safety rules from the handbook and outlines below must be followed at all times in the printmaking labs. Failure to comply with this guidance may result in studio access being revoked. In case of a medical emergency, dial 911 or Campus Police (392-1111). Any accidents or injuries must be reported to your faculty or TLS immediately.

Alagarto Printmaking Guild

The SAAH student organization for printmaking, Alagarto, is open to membership from any UF students. However, being a member of Alagarto does not grant access privileges to the studios, you must be a currently enrolled student to use the space. Use of the printmaking studios is permitted in conjunction with area faculty for certain scheduled events.

Alagarto Printmaking Guild is a community of UF students dedicated to fellowship and collaboration through the graphic arts. We seek to provide enrichment, engagement, and professional development opportunities to our members.

In the past, Alagarto has collaborated with visiting artists, the Harn Museum, and the local community on a variety of projects. We are an inclusive organization for all skills levels and artistic backgrounds, and welcome any and all members as creative equals.

Alagarto will be operating in a primarily remote modality, but will still be holding monthly meetings and printing events. Contact Myles Dunigan (mdunigan@arts.uf.edu) for details about membership.

- No drugs or alcohol are permitted in the studios. Smoking is prohibited on UF's campus.
- Personal protective equipment must be worn when handling printmaking materials. Gloves and safety goggles must be worn when using any solvents or hazardous materials.
- Closed-toed shoes must be worn at all times in the studios (no sandals, flip-flops, etc.)

- Long hair should be tied back when using the etching or lithographic presses. Do not wear dangling jewelry or loose-fitting clothes when operating the presses.
- All materials must be labeled and properly stored. Do not leave projects on tables, cutting surfaces, or obstructing any door/hallways.
- Flammable waste must be disposed of in red disposal bins.
- Clean up any spills and immediately report them to the teaching lab specialist.
- Do not use unauthorized materials (dry pigments, clay/plaster, ammonia-based cleaners, etc.) in the studio.

Equipment

The printmaking area contains certain specialized equipment for print processes (presses, exposure units, power-washer, etc.) Do not use any equipment without training from your instructor or area TLS. The use of printmaking equipment will be covered in your course instruction and by special permission from area faculty. If you see students using equipment in an improper or dangerous manner, please ask them to stop what they are doing and report to your faculty or TLS. Equipment/Tools/Materials must remain in the lab areas at all times.

Studio Maintenance

We are all responsible for maintaining a clean, organized print shop, and each person using the space is expected to clean up after themselves. Always leave the studio cleaner than when you found it.

- Do not leave ink on the glass slabs or on brayers if you are not working. Even if you are simply taking a break, clean up your space so someone else can use it.
- Wipe down the press bed after every use. Do not leave plates/stones/blocks on the press if you are not actively printing.
- If we are running low on a certain solvent or cleaning material, contact your faculty, TA, or TLS and let them know.
- Recycle your paper scraps if they are clean! Dispose of garbage properly.
- Only use your own designated cubby or flat file. Never take materials from another student's drawer or storage area.
- Disinfect all work surfaces according to COVID guidance.

Printmaking Computer and Transparency Printer

The printmaking area includes a computer and digital inkjet printer (FAC 308A) for making photo transparencies for certain processes. Printer use is reserved for students enrolled in printmaking courses that use photo processes. Contact Myles Dunigan (mdunigan@arts.ufl.edu) or your faculty regarding access. Due to COVID, printing is available in a limited capacity and only for certain classes. Please prepare your files using your own computer in advance of printing.

Acid Room

Gloves and goggles must be worn at all times in the acid room (FAC 318A). Nitric acid is hazardous and caustic, and use of the etching baths require the ventilation system to be on. Ask for assistance with etching your plates, nitric baths are for zinc only currently, do not use them for copper or steel. If you come into contact with acid, wash the affected area immediately with water and report the incident.

UF Policies

UF Philosophy

UF encourages the intellectual and personal growth of its students as scholars and citizens. As an educational institution, the University recognizes that the transmission of knowledge, the pursuit of truth, and the development of individuals require the free exchange of ideas, self-expression, and the challenging of beliefs and customs. In order to maintain an environment where these goals can be achieved safely and equitably, the University promotes civility, respect and integrity among all members of the community. As stated in the Standard of Ethical Conduct, students are expected to exhibit high standards of behavior and concern for others.

Academic Honesty Policy

As a result of completing the registration form at UF, every student has signed the following statement: "I understand that the University of Florida expects its students to be honest in all of their academic endeavors and understand that my failure to comply with this commitment may result in disciplinary action up to and including expulsion from the University." The Honor Code (<http://www.dso.ufl.edu/sccr/process/student-conduct-honor-code/>) specifies dishonest behaviors and possible sanctions.

Understand that the University of Florida expects its students to be honest in all of their academic work. Please adhere to this commitment to academic honesty and understand that failure to comply with this commitment may result in disciplinary action, up to, and including, expulsion from the University.

As artists, we might work in a style commonly known as "appropriation," but it is common courtesy to cite your sources, even when working in a non-written form. Include the names and artwork titles of any work you cite in your projects.

Disruptive Behavior

Any member of the UF community who acts intentionally to impair, interfere with, or obstruct the mission, purposes, order, operations, processes, and functions of the University shall be subject to appropriate disciplinary action by University authorities for misconduct, as set forth in the applicable rules of the Board of Regents and the University and state law governing such actions. Be advised that you will be dismissed from class if you engage in disruptive behavior.

Health and Safety Guidelines

The School of Art + Art History Health and Safety Policy handbook provides policy and training for health and safety. Students must follow handbook policies, receive proper training, and sign the signature page, no later than the third class meeting. Please make yourself familiar with the SA+AH Health and Safety Program at:

<https://arts.ufl.edu/site/assets/files/37319/saahhealthandsafetyhandbook.pdf>

Campus Resources:

U Matter, We Care:

If you or someone you know is in distress, please contact umatter@ufl.edu, 352-392-1575, or visit U Matter, We Care website to refer or report a concern and a team member will reach out to the student in distress.

Counseling and Wellness Center: Visit the Counseling and Wellness Center website or call 352-392-1575 for information on crisis services as well as non-crisis services.

Student Health Care Center:

Call 352-392-1161 for 24/7 information to help you find the care you need, or visit the Student Health Care Center website.

University Police Department:

Visit UF Police Department website or call 352-392-1111 (or 9-1-1 for emergencies).

UF Health Shands Emergency Room / Trauma Center:

For immediate medical care call 352-733-0111 or go to the emergency room at 1515 SW Archer Road, Gainesville, FL 32608; Visit the UF Health Emergency Room and Trauma Center website.

GatorWell Health Promotion Services:

For prevention services focused on optimal wellbeing, including Wellness Coaching for Academic Success, visit the GatorWell website or call 352-273-4450.

E-learning technical support:

Contact the UF Computing Help Desk at 352-392-4357 or via e-mail at helpdesk@ufl.edu.

Career Connections Center:

Reitz Union Suite 1300, 352-392-1601. Career assistance and counseling services.

Library Support:

Various ways to receive assistance with respect to using the libraries or finding resources.

Teaching Center: Broward Hall, 352-392-2010 or to make an appointment 352-392-6420. General study skills and tutoring.

Writing Studio:

2215 Turlington Hall, 352-846 1138. Help brainstorming, formatting, and writing papers.

Student Complaints On-Campus:

Visit the Student Honor Code and Student Conduct Code webpage for more information.

On-Line Students Complaints:

View the Distance Learning Student Complaint Process.