

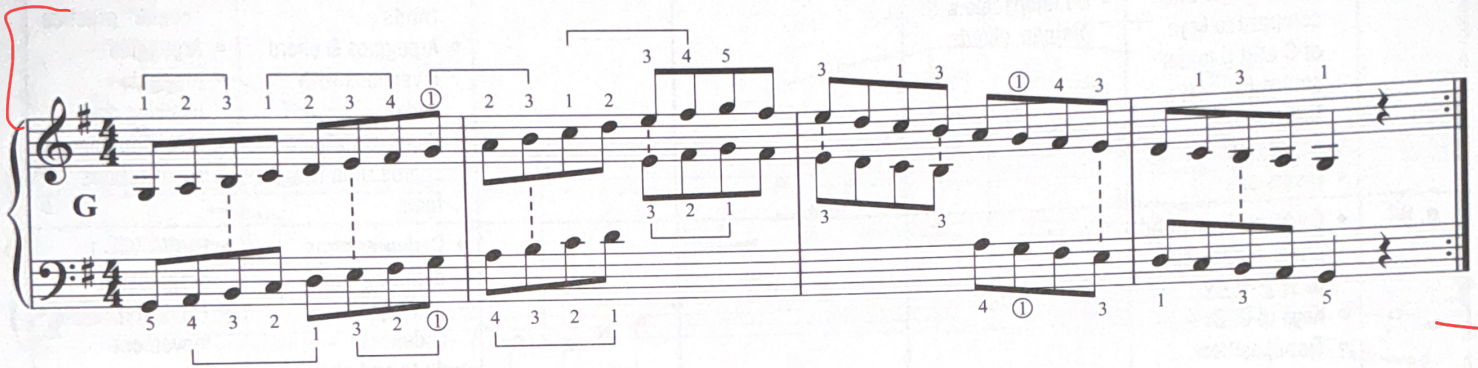
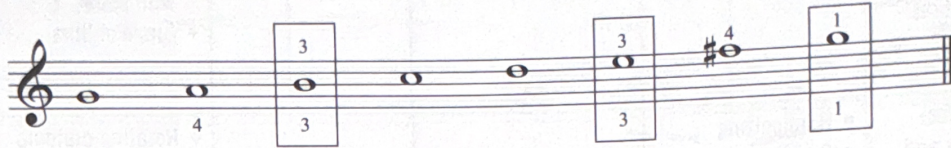
THE G MAJOR SCALE

PIANO 1

Group I Scales: C, G, D, A, E

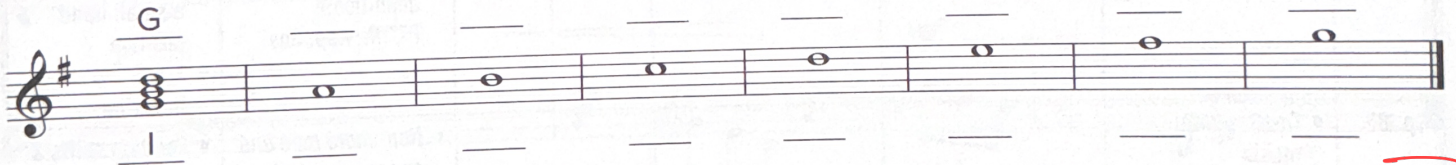
+ F and B
(Different fingerings)

- The G major scale uses the same fingering as C major. (Group I.) Study the scale tips and memorize the fingerings.
- Third fingers only play the 3rd and 6th scale degrees (B and E) while the fourth fingers only play next to the tonic.
- Thumbs play together on the keynote—the exception: LH begins on 5, RH ends on 5.
- Practice hands alone as you say finger numbers noticing the bracketed groups of 3 and 4 fingers, then play together.



Diatonic Harmony in the Key of G

- Write and label diatonic triads on each step of the G scale. Play and pedal each chord. (Review p. 63 and p. 64.)



G Major Arpeggios and Inversions

- Practice the arpeggio blocked and inversion warm-up hands alone and together to memorize fingerings.
- For inversion success, remember finger 2 or 3 replaces the previous high note (the low note when going down).
- Pedal all chords.



Both Hands



Chord Progressions: I-IV⁶₄-I-V⁶₅

- If needed, say the step-wise finger movement between chords to find the correct chord tones easily in each key. (Ex: up a 1/2, up a whole; back home; down a 1/2 to the *leading tone* (7th scale degree) middle up 1/2, etc. (Review p. 66.)
- Transpose to keys of D and E^b.

in C. D. E. F. G. A. B

C

D^b

+ Sight Reading

Chord Harmonization

- Harmonize and play the melodies using I, or IV_4^6 or V_2^6 . Label harmony on the lines located below the treble clef.
- Pedal chord changes and transpose to keys given. Review LH chord progressions in new keys before you begin.
- Go back and harmonize the melodies using the lead sheet chords. Write chords on the bass clef staff.
- See and identify non-harmonic notes. (See p. 85.)

Dreidl Fun

Chord progression for *Dreidl Fun* (E major):

System 1: E, E+, C[#]m/E, E, F[#]m

System 2: D[#]dim, C[#], F[#]m/C[#], B7*, E

Transpose I-IV-V7 version to E^b & F.

Angels We Have Heard On High

- Find an appoggiatura. (Review p. 85.)

19th C. French

Chord progression for *Angels We Have Heard On High* (B^b major):

System 1: D^b, E^bm, Fm, B^b/F, E^bm, Fm, G^bdim, D^b/F

System 2: D^b, B^bm/D^b, G^b/D^b, F/C, E^bm/B^b, Fm/C, G^b/D^b A^b/E^b, D^b

Transpose I-V7 version to D & _____.

Can You Feel the Love Tonight

from Walt Disney Pictures' *The Lion King*

Music by Elton John
Lyrics by Tim Rice

Moderately

1 3 1

mp There's a calm sur - ren - der to the rush of day

2/5 3

5

5 3 1 4 1

cross over 4/2

when the heat of a roll - ing wind can be turned a - way.

5 3 1 1 5

9

1

An en - chant - ed mo - ment, and it sees me through. It's e - nough for this

2/5

14

5 4 4/2 1 3 1 4

rest - less warrior just to be with you.

5

18

Can you feel the love to - night?
Can you feel the love to - night?

22

It is where we are.
How it's laid to rest?

26

mf It's e-nough for this wide - eyed wan - der - er
It's e-nough to make kings and vag - a - bonds be -

30

that lieve we the got this far.

34

ver - y best.